

## DATASHEET

# Continuous Network Assessment

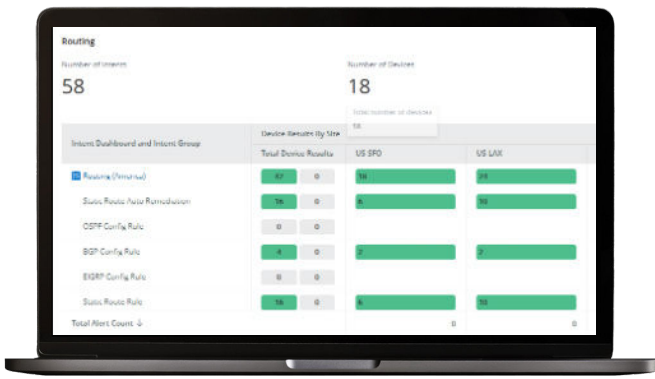
Continuous Network Assessment is a powerful new means to assure that your digital infrastructure is running at top performance and is supporting the specific needs of the business and all its applications. Unlike traditional limited scope, labor-intensive network assessments, continuous network assessment enables you to always be assured that the end-to-end hybrid digital infrastructure is delivering network services as defined by the architects, business leaders and security professionals.

Through the power of our no-code intent-based network automation, you can now continuously assess every aspect of your network and its impact to your services delivery plan. We have gathered 10 of the most common network assessments and the associated dashboards which reveal how your hybrid multi-vendor, multi-cloud network is performing.



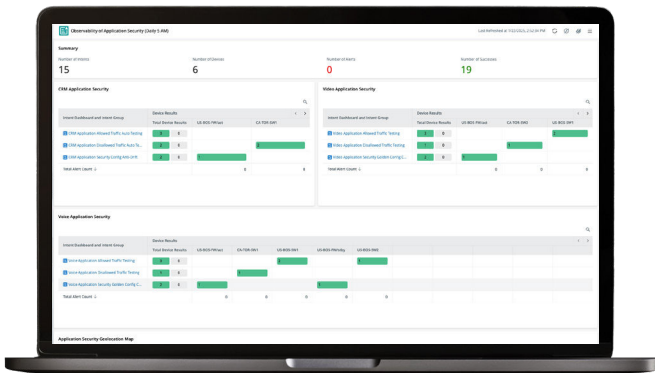
## Change Assessment

What has changed in my hybrid network during the recent period? So many organizations have the ability to make changes to network, this assessment has the ability to identify network-wide where changes have been made by anyone.



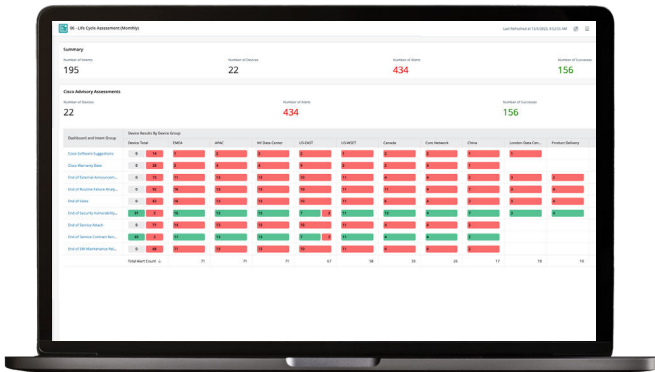
## Network Health Assessment

Is my hybrid network performing at 100% of my intended performance levels? Continuously Assess the status of: L3 Routing, L2 Switching , Failover, VPN, Wireless, Error logs and any number of other critical operating parameters.



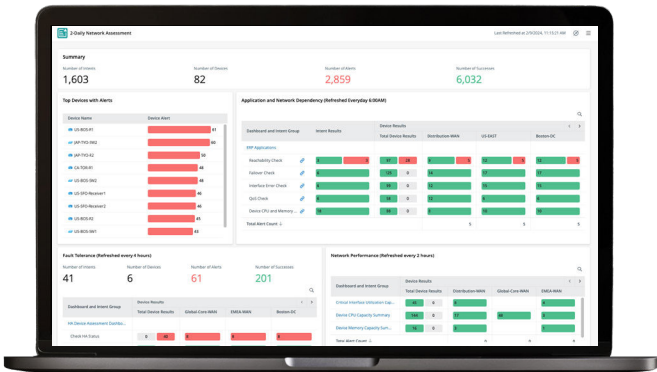
## Critical Applications

Are my applications being supported by the network? For modern networked applications, the only way to ensure their success and health is to have full visibility of the underlying components and continuously assess the health of each.



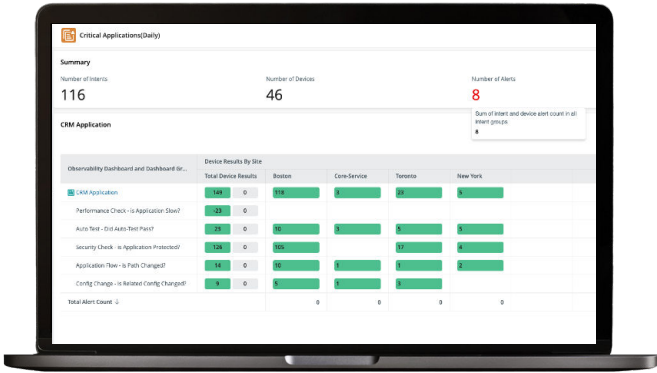
## Anti-Drift Assessment

Where has the network deviated from my ideal configuration rules? Drift occurs for many reasons which usually starts with human error but may have root causes in organizational mis-alignment, remediation process problems, or security scale.



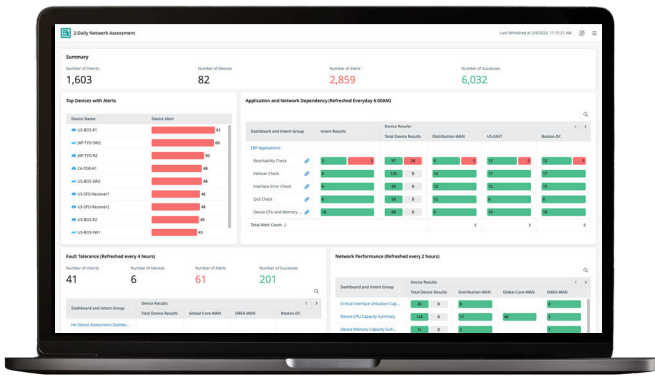
## Security Assessment

Am I vulnerable? The network industry leaders are working together to enhance network security and NIST publishes a set of configuration standards for security. Additionally, each major network vendor provides CVE bulletins for vulnerability and exposures.



## Life Cycle Assessment

Are there any components in my network that are considered End-of-Life or End-of-Service? Vendors like Cisco make API call available to get up-to-data advisory of end of life, maintenance, service, warranty information of your network.

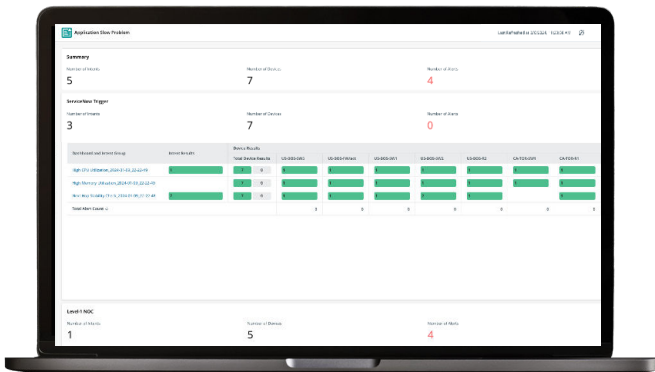
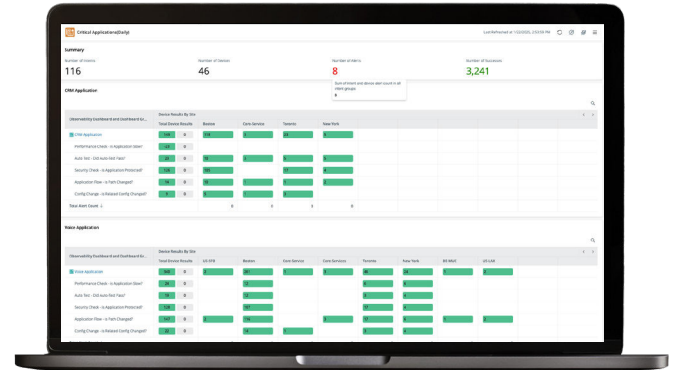


## Hybrid Network Assessment

Are my cloud services, ACI deployments and hybrid components operating as expected? Critical applications span many different technologies and the performance of each can affect service delivery.

## Triggered Automation Assessment

What issues have occurred in the last period of time which required the assistance of NetBrain? Auto-diagnosis applied to incoming incident via API, leading to Auto-closing ticket if problem is noise, Auto-opening if actual issues are found, and Auto-priority if the problem's production impact is high.

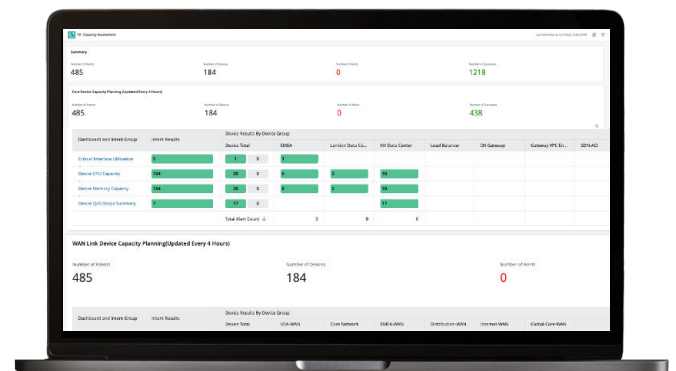


## Past Outage Assessment

Have any of the problems that have previously been detected, re-occurring? Apply problem-based assessment across your entire network and monitor the results continuously.

## Capacity Assessment

Does my network have the capacity needed to support all of your business applications? Continuous capacity assessment reduces the risk of over-utilization and underutilization across network.





# If You Can THINK it, You Can Continuously Assess it...

“What is the status of my Cloud Services?”

Feature ID	Feature Instance	Discovered Designs	Design Applied to # of Devices
AAA_Group	AAA_Group_NCS540L-NCS540L	1	8
AAA_Group	AAA_Group_NCS-5504	1	8
AAA_Group	AAA_Group_NCS-5508	1	8
AAA_Group Discovered Designs		3	24
AAA	AAA_Config_ASR-920	7	448
AAA	AAA_Config_C6807-XL	1	3
AAA	AAA_Config_CGR-2010/K9	1	10
AAA	AAA_Config_CGS-2520		
AAA	AAA_Config_CISCO3945-CHASSIS		
AAA	AAA_Config_IE-4010		
AAA	AAA_Config_NCS540L-NCS540L		
AAA	AAA_Config_NCS-5504		
AAA	AAA_Config_NCS-5508		
AAA	AAA_Config_SM-D		
AAA	AAA_Config_WS-C6509		
AAA - unclassified			
Clock	Clock		
Clock Discovered Designs			
IP_Domain	IP_Domain		
IP_Domain Discovered Designs			
License	License_Config_ASR-920		
License	License_Config_CGR-2010/K9		
License	License_Config_CGS-2520		
License	License_Config_CISCO3945-CHASSIS		
License	License_Config_IE-4010		
License	License_Config_NCS-5504		
License	License_Config_NCS-5508		
License	License_Config_SM-D		
License - unclassified		14	699
LOGGING	Logging	1	691
Logging Discovered Designs		1	691

### Key Metrics

- #of config templates found
- #of devices protected
- #of failover devices found and protected

Reverse Engineer  
Config rules &  
Network State

Continuous Network  
Assessment

