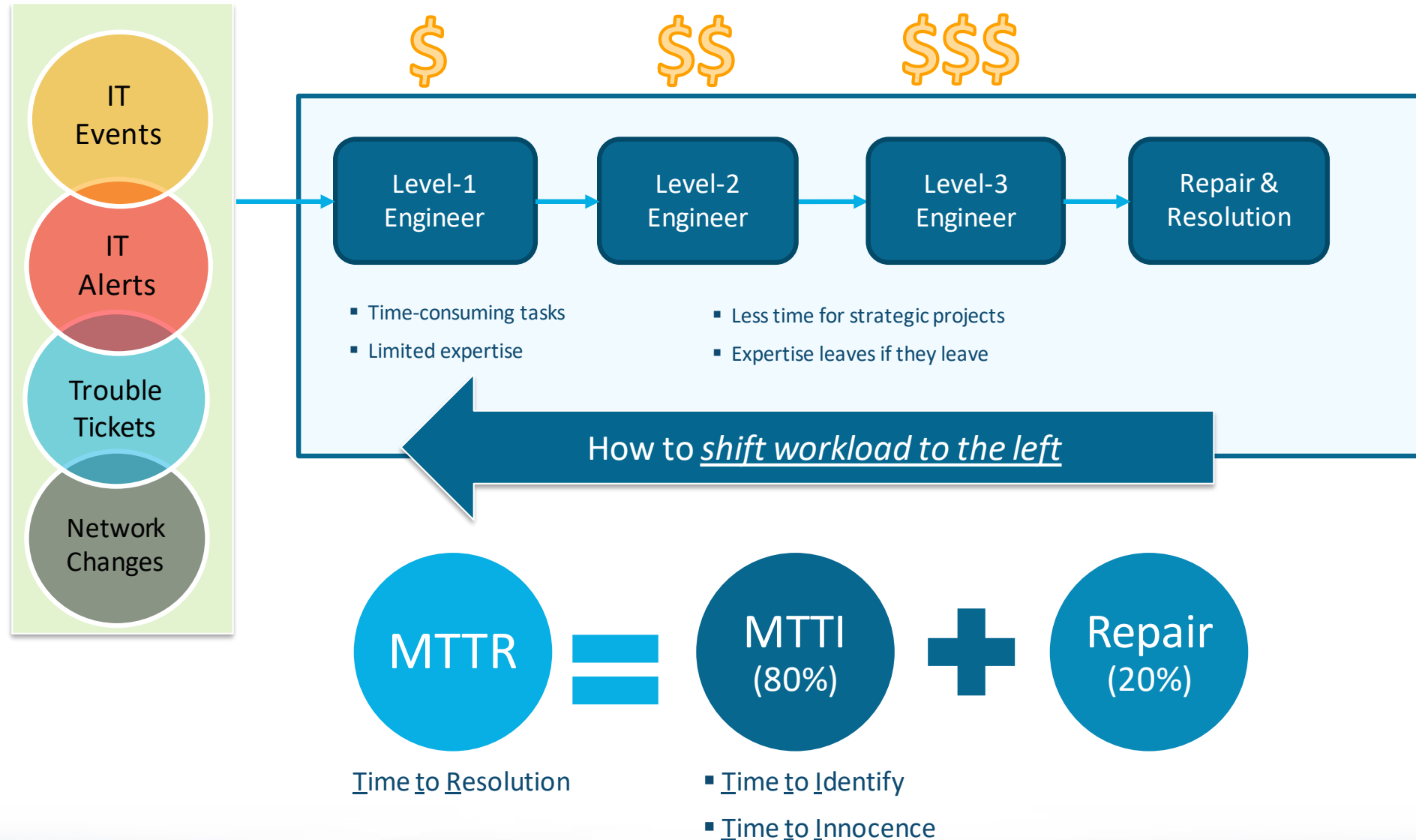




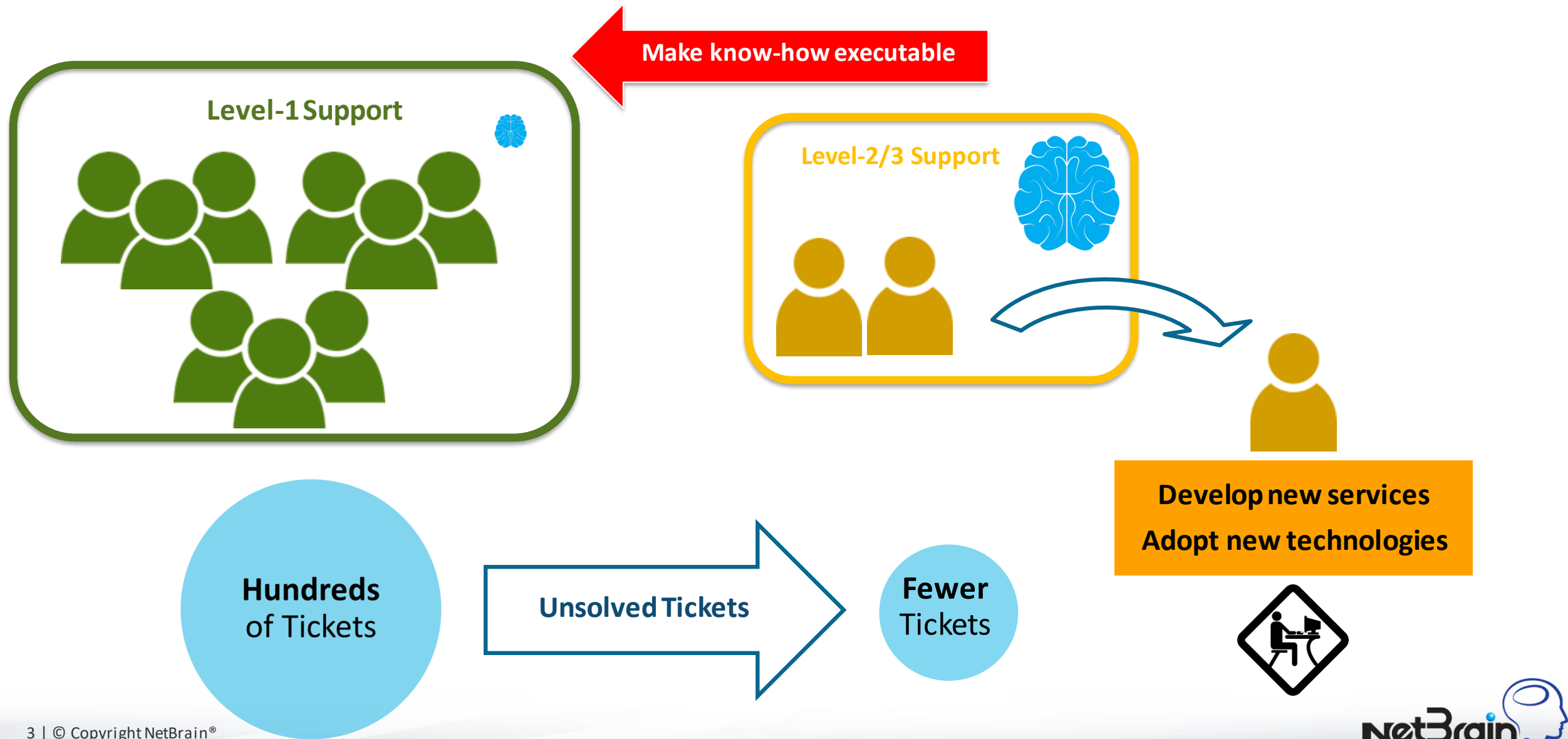
Collaborative Automation for IT Operations

What's New in NetBrain 8.0

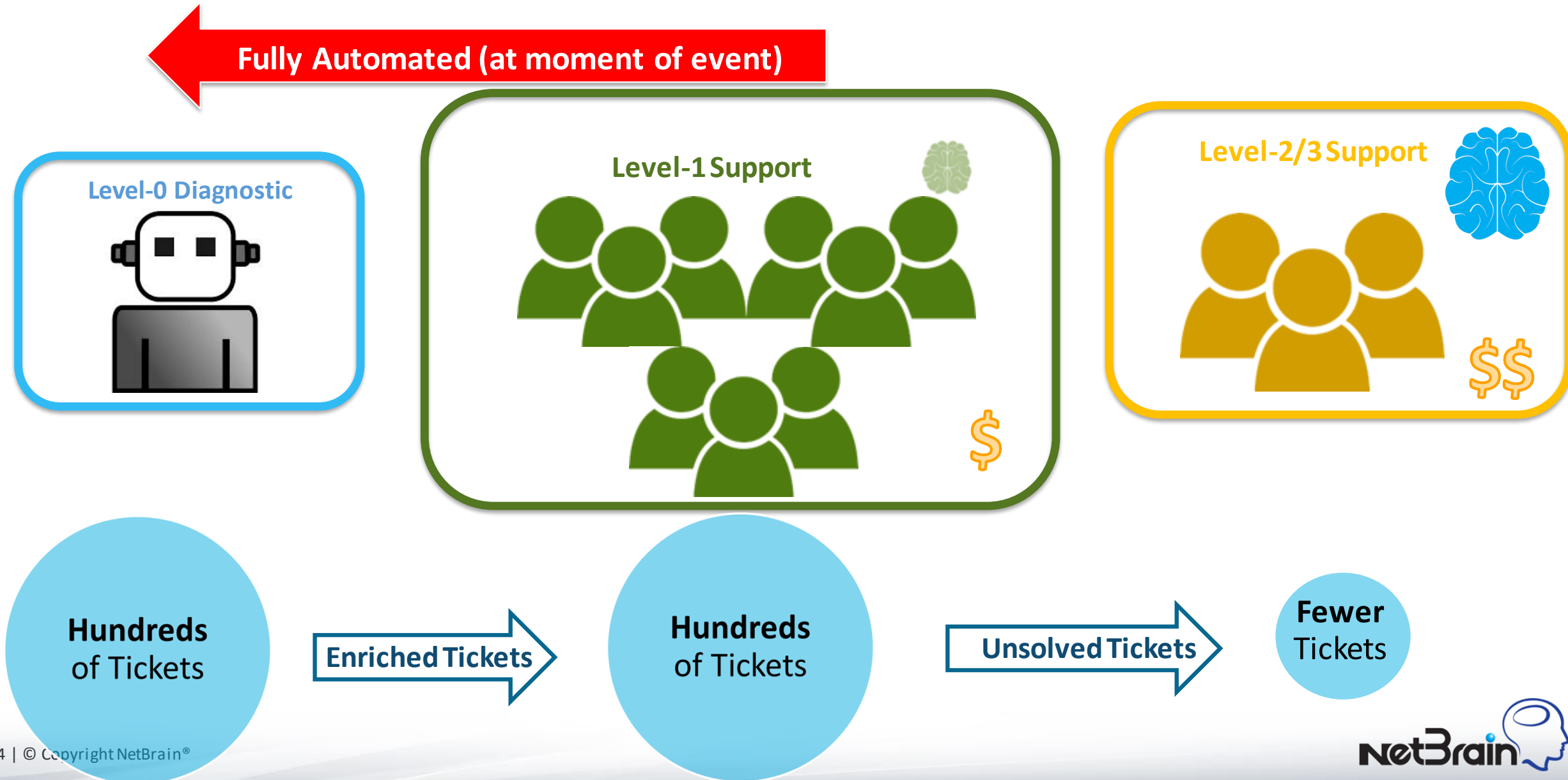
A Typical IT Workflow



Shift-Left – Empower First Level Engineers



Shift Left – Enrich Every Ticket with Automated Diagnostics

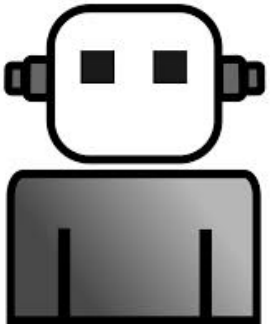


Benefits of “Shift-Left”

Automate Common Diagnostics

Make know-how executable

Level-0 Triggered Diagnostic



Level-1 Support

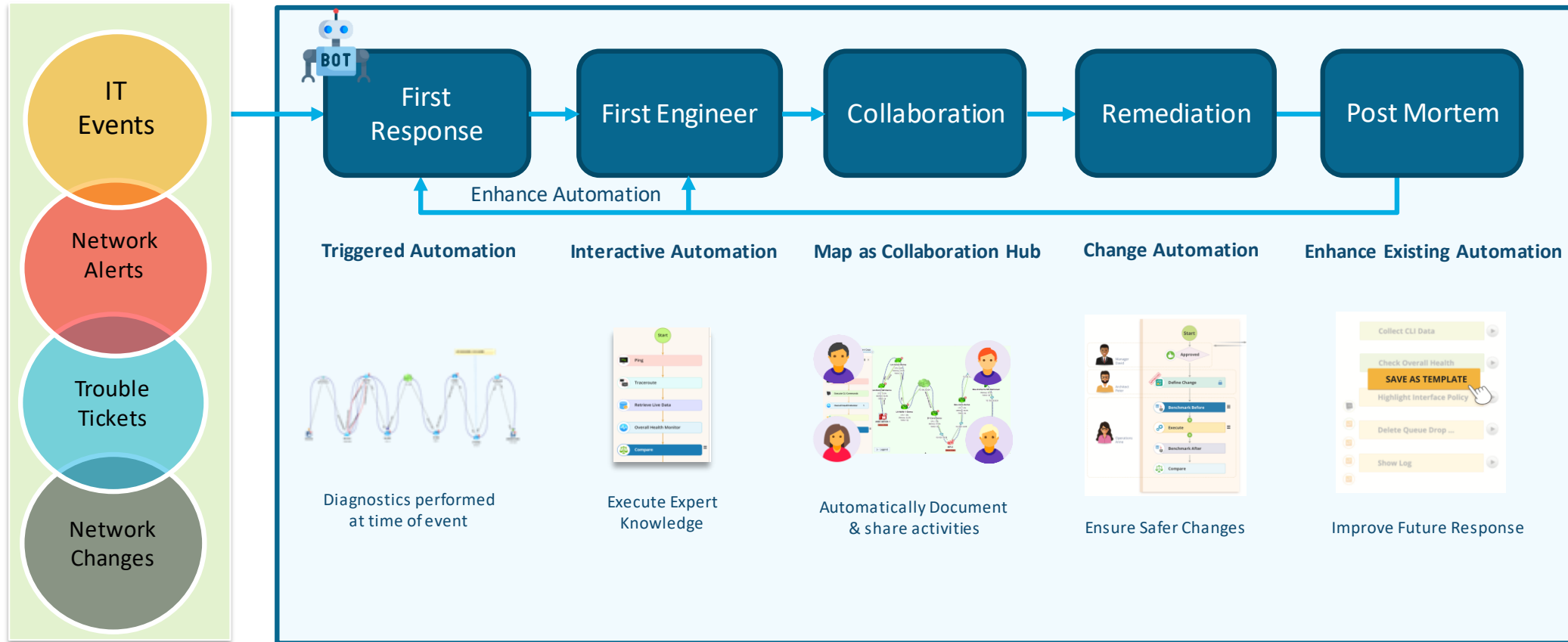


Level-2/3 Support



- Reduce MTTR, increase customer satisfaction
- Free-up technical resources for high-value projects
- Streamline operations and improve productivity

Sample Workflow of Just-in-Time Automation



How NetBrain 8.0 Moves This Forward

How automation helps teams work more collaboratively



What's New in NetBrain 8.0



Collaborative Automation

1 Dynamic Map 2.0

Now, Dynamic Map is an even more powerful UI to the network... helping teams share know-how and real-time insights during troubleshooting.

2 Golden Baseline

AI-powered Golden Baseline discovers, records, and analyzes up to 12,000 data points per device, to document the network's *nominal* conditions

3 Knowledge Cloud

Continuous delivery of platform capabilities for today's evolving networks

4 Smart CLI

Troubleshoot collaboratively with recorded, sharable device diagnostics



Platform Improvements

5 Topology Enhancements

More intelligence, more technologies, and more actionable insights within Topology analysis and A/B Path Mapping

6 Ansible Integration

Scale Ansible across your entire network infrastructure



Application-Centric Networks

7 Enhanced SDN Support

Reduce the friction migrating to SDN

8 Application Assurance

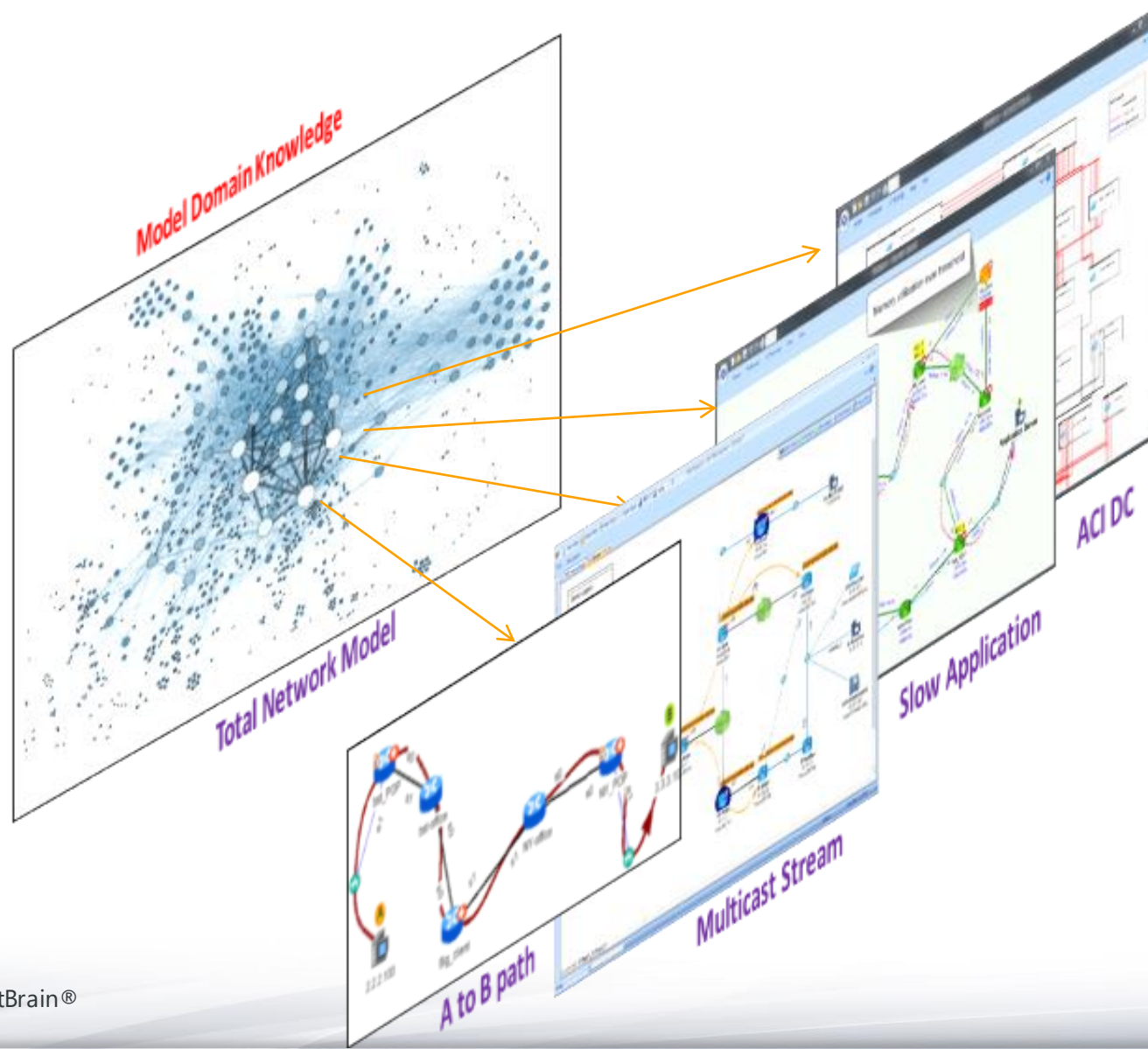
Monitor and verify critical multi-tier application dependencies

Collaborative Automation

Share know-how and make it executable



Dynamic Map: The User Interface to the Network



Define Tasks | Intent

I/O for Automation

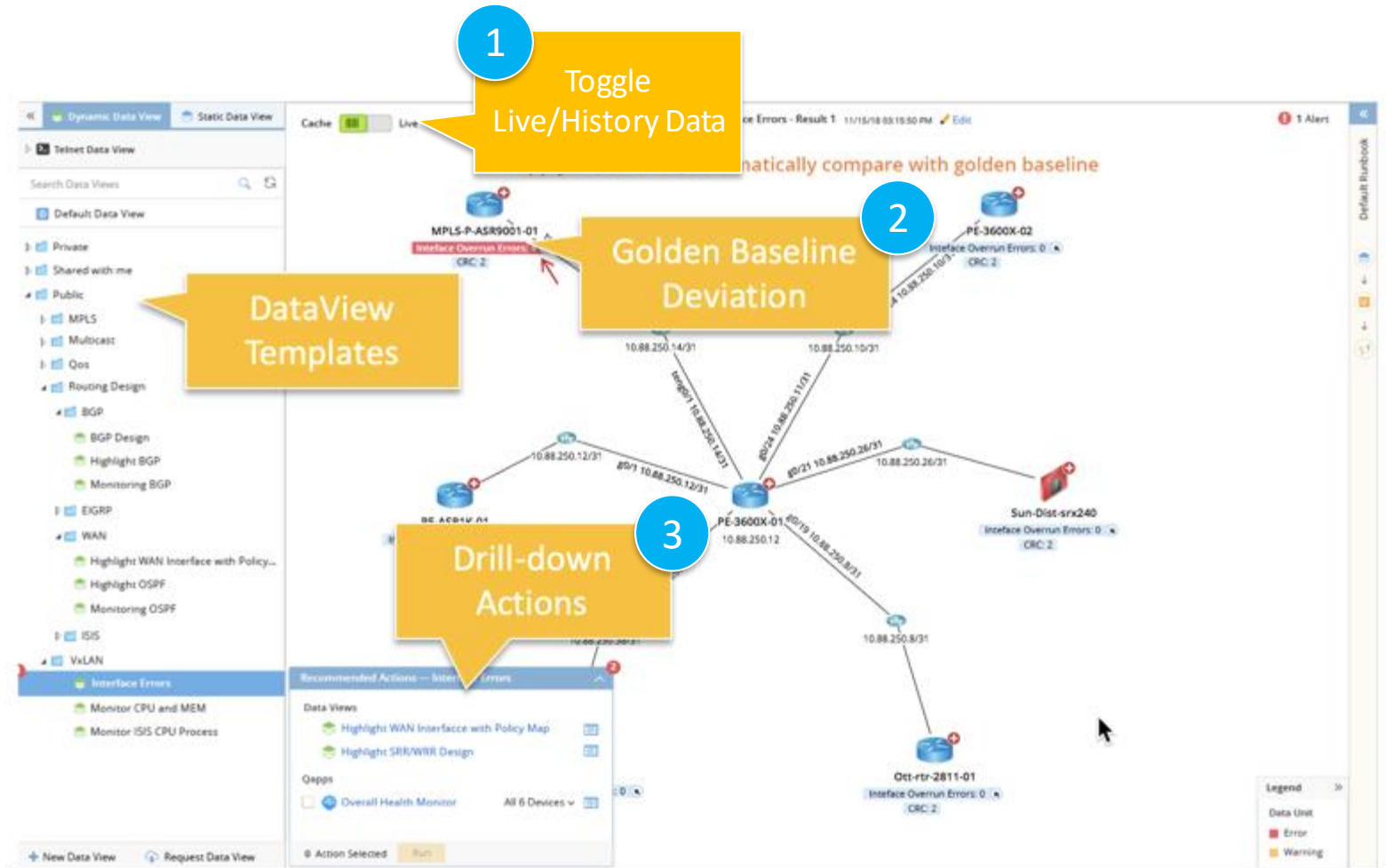
Collaboration Media

Dynamic Map 2.0

Three questions an *advanced* engineer will (eventually) answer:

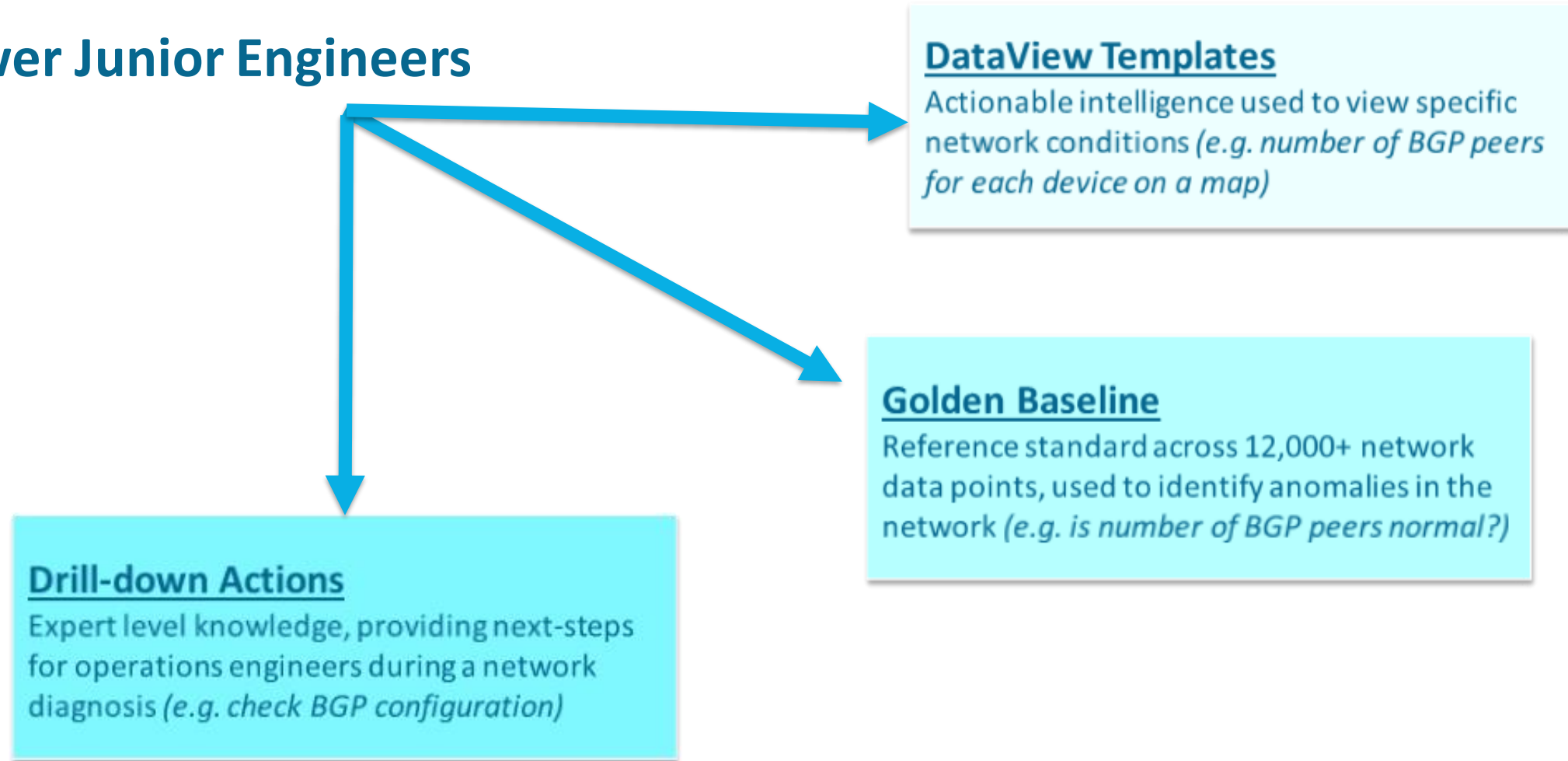
- 1 Has something CHANGED?
- 2 Is the network in a “NORMAL” state?
- 3 WHAT SHOULD I DO NEXT to continue my diagnosis?

Dynamic Map 2.0 addresses all three, enabling junior engineers with advanced diagnostic and automation capabilities.



What's New with Dynamic Map 2.0

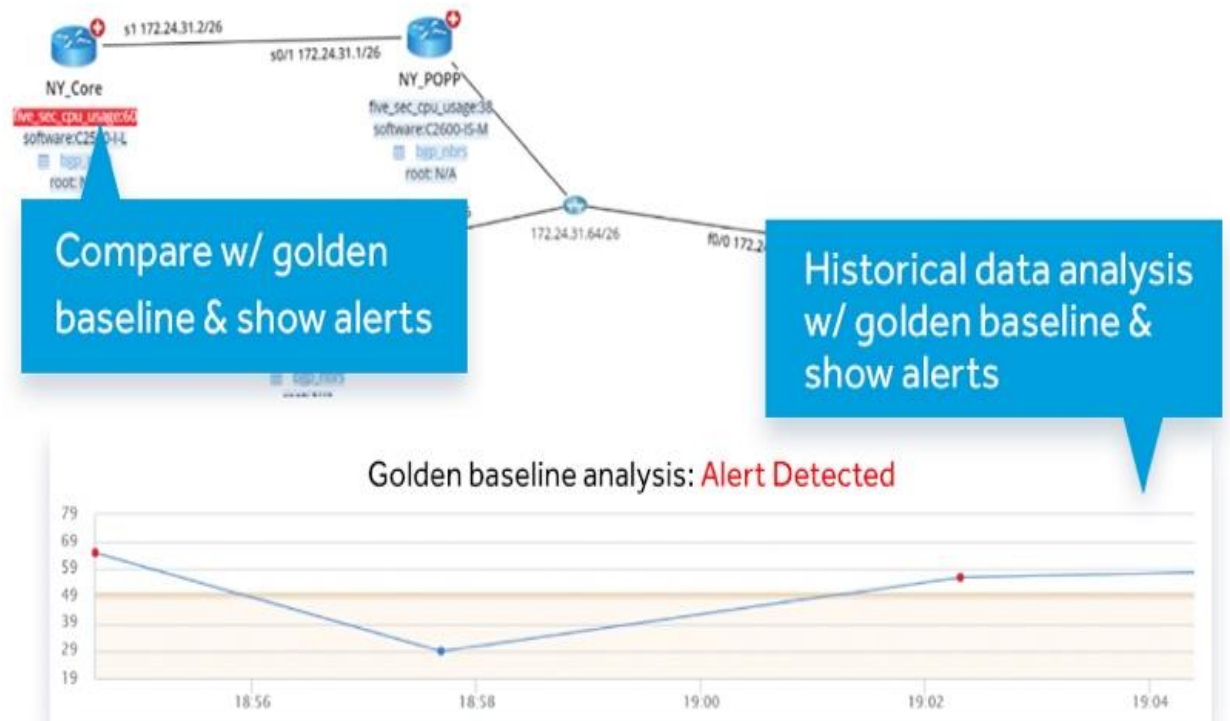
Empower Junior Engineers



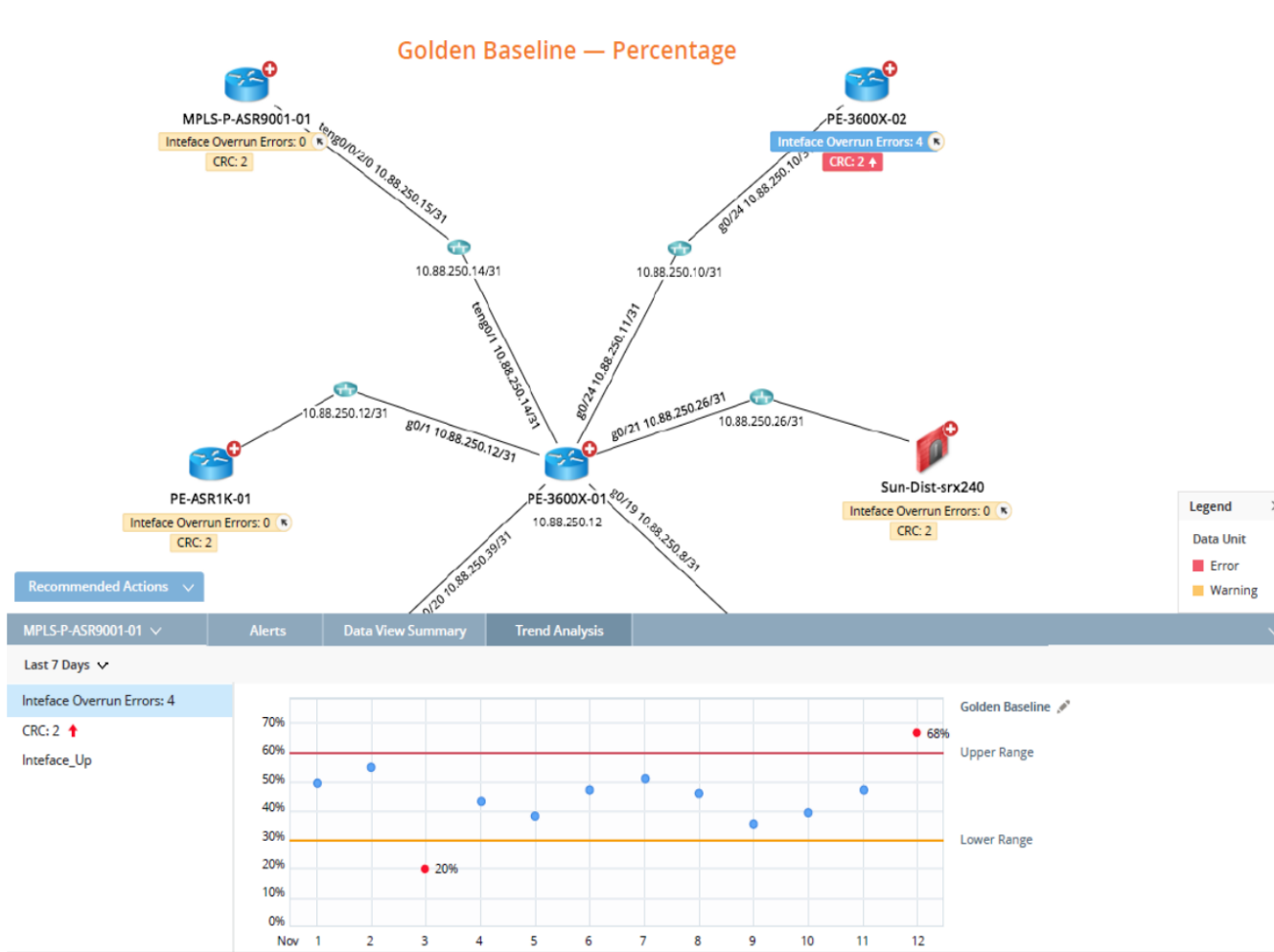
Golden Baseline

What's your network's **normal state**? Discover with **Golden Baseline**

- **Discover, document, and analyze** up to 12,000 data points per network device
- **Build a reference standard** of your network's nominal status
- **Automatically calculate Golden Baseline** based on Artificial Intelligence applied to benchmark data
- **Automatically compare** live data with Golden Baseline



Golden Baseline



- **Golden Baseline** defines key characteristics of a “normally performing” network, for example:
 - Device CPU range (e.g. 30 - 60%)
 - Interface errors (e.g. CRC should not increase)
 - Neighbor relationships (e.g. R1 has 3 BGP neighbors)
 - Standard secure configurations
- The system can automatically recommend golden baseline values by observing network behaviors (via Artificial Intelligence)
- Baseline can also be manually defined and tuned.

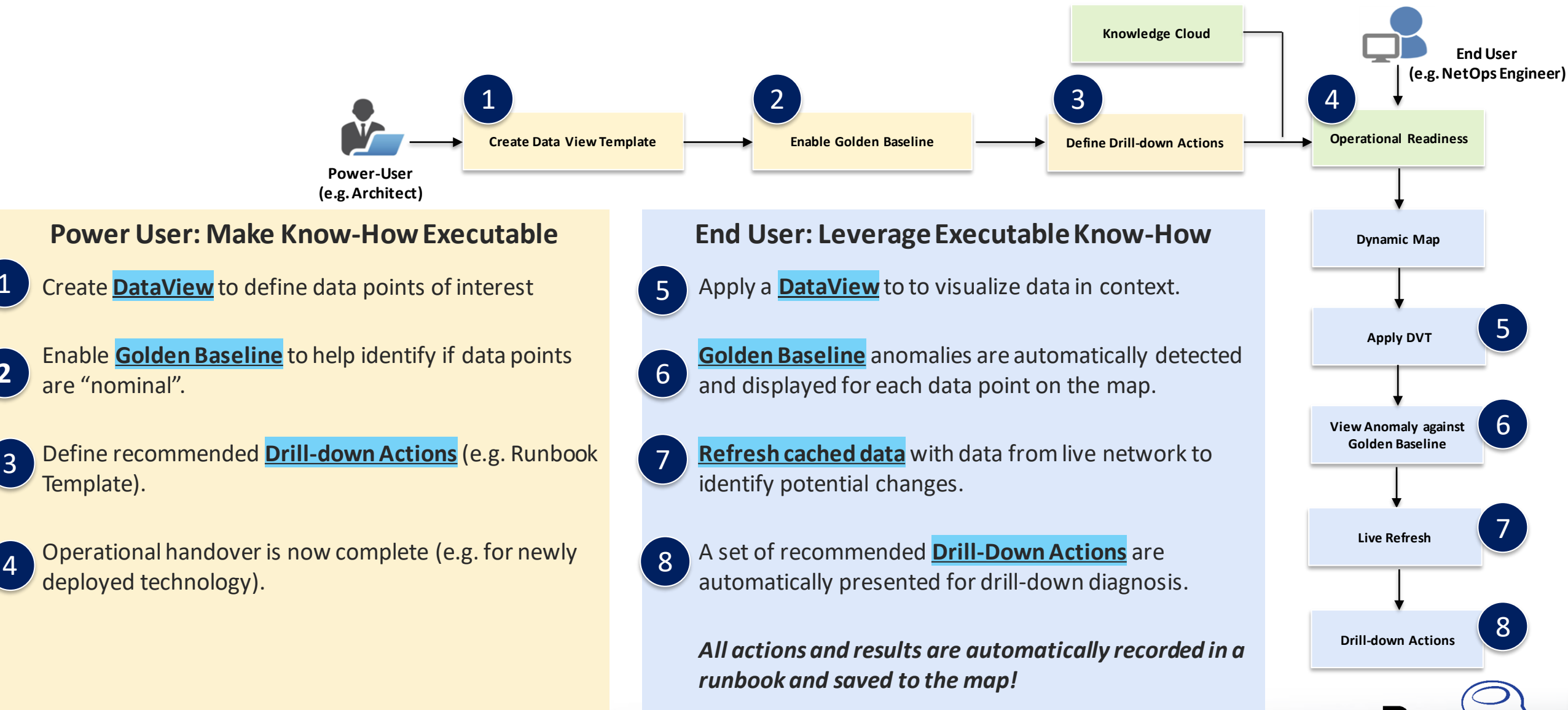
DataView Template Drill-down Actions

Utilize 14 types of Drill-down Actions within DVTs to operationalize your expert knowledge!

- Runbook template
- Qapp/Gapp
- Overall Health Monitor
- CLI Commands
- A/B Path
- Compare with historical data
- ...



Share Know-How with Dynamic Map 2.0



NetBrain's Team is Adding New DataViews All the Time

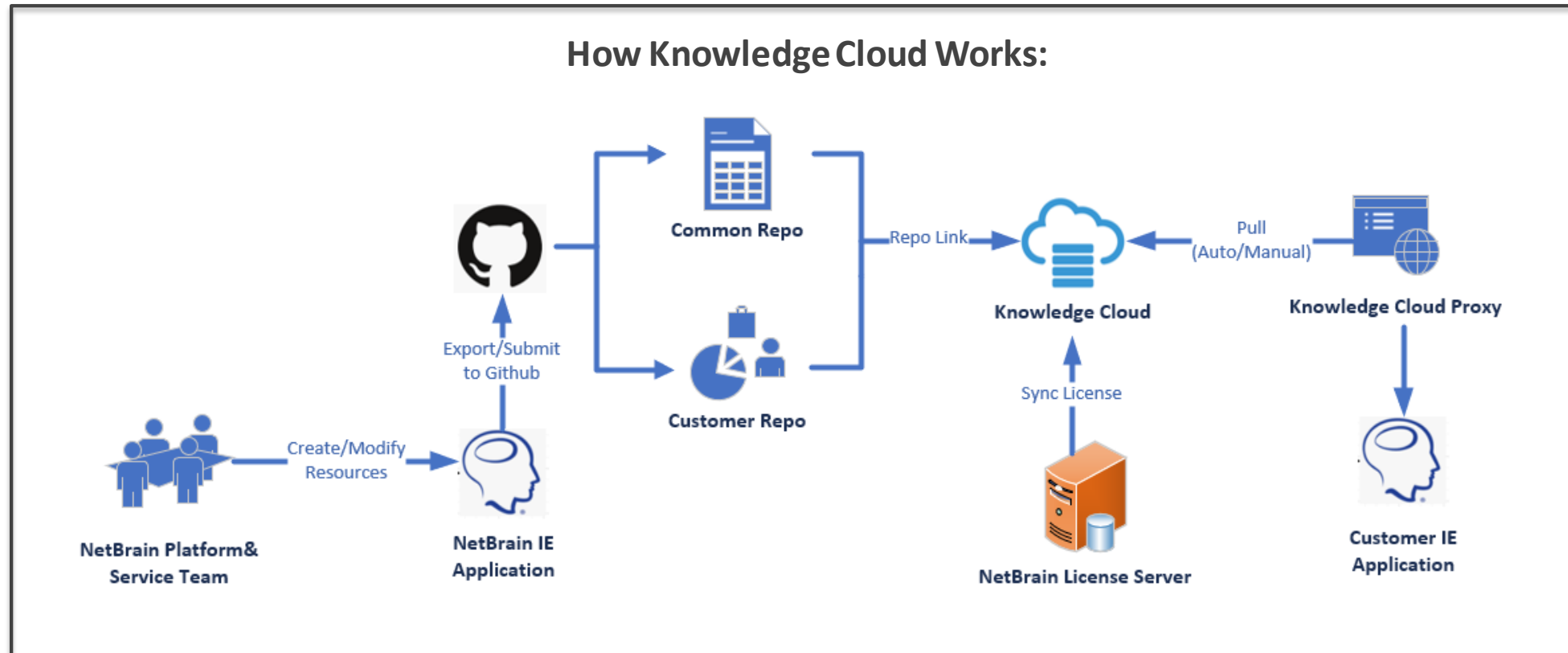
NetBrain's Network Engineering & Automation Team is codifying their own know-how, and making it available to customers:

- Customers don't need to build their own DVTs to empower junior engineers on the team
- Each new DataView is a potential "Killer App" of NetBrain
- New DataViews added all the time!



Knowledge Cloud

Knowledge Cloud is a new cloud repository enabling instantaneous delivery of NetBrain platform assets, including **DataView Templates, Executable Runbooks, drivers for new vendors, A/B path support, etc.**



Smart CLI: Document & Share CLI Data

- Easier access to CLI (still a must-have tool) – directly from map, with auto-login
- Record CLI output (e.g. show command) to NetBrain runbook with one click
- Turn static CLI output (text) into “smart variables” for automation (e.g. monitor every device in map)

1 Click Document Button

2 CLI output documented in runbook

3 Raw text converted to "smart variables"

4 Instant Automation

Platform Improvements

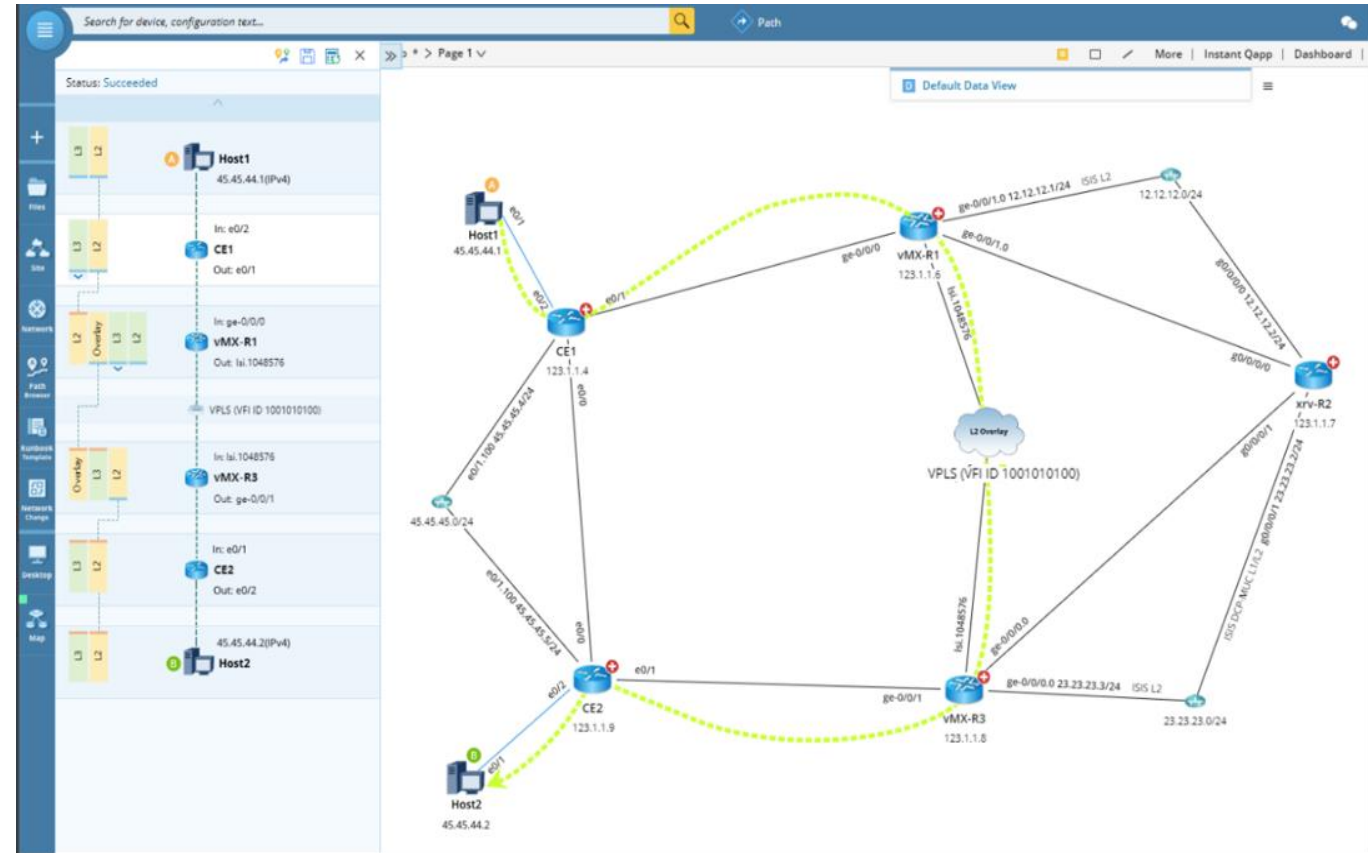
More Network Intelligence Discovered



Topology Enhancements

Today's networks are driving innovation through technology investments

- At the core of NetBrain is the **network discovery** and the building of the network data model
- With NetBrain 8.0's Topology Discovery Enhancements, you gain **more visibility**
 - » Improved wireless support
 - » Improved A/B pathing algorithms
 - » Support for the latest technologies



A/B Path across a VPLS Overlay Network

Topology Enhancements

Technology Name	Data Model Support	Topology Support	Path Support	Supported Device Type
VXLAN	√	L2 overlay	√	<ul style="list-style-type: none"> • Cisco Nexus Switch
OTV	√	L2 overlay	√	<ul style="list-style-type: none"> • Cisco Nexus Switch • Cisco Router (CSR)
VPLS	√	L2 overlay	√	<ul style="list-style-type: none"> • Cisco IOS XR • Juniper Router
HA/Cluster	√	L3	√	<ul style="list-style-type: none"> • Cisco ASA Firewall • Cisco Router • Juniper SRX • Palo Alto Firewall
Transparent Device	√	L2	√	<ul style="list-style-type: none"> • Riverbed WAN Optimizer • Cisco ASA Firewall • Palo Alto Firewall (Virtual Wire)

Topology Enhancements

Technology Name	Data Model Support	Topology Support	Path Support	Supported Device Type
MC-LAG	√	L2	√	<ul style="list-style-type: none"> • Cisco Nexus Switch • Arista Switch • Dell Force10 Switch • Checkpoint Firewall • Cisco ASA Firewall
FEX Dual-Homed	√	L2	-	<ul style="list-style-type: none"> • Cisco Nexus Switch
Port-Channel	√	L2	√	-
End System	√	L3	√	<ul style="list-style-type: none"> • Ubuntu Server • Windows Server • Mac Server • Printer
Wireless	√	L2	√	<ul style="list-style-type: none"> • Cisco LWAP • Cisco WLC

Topology Enhancements

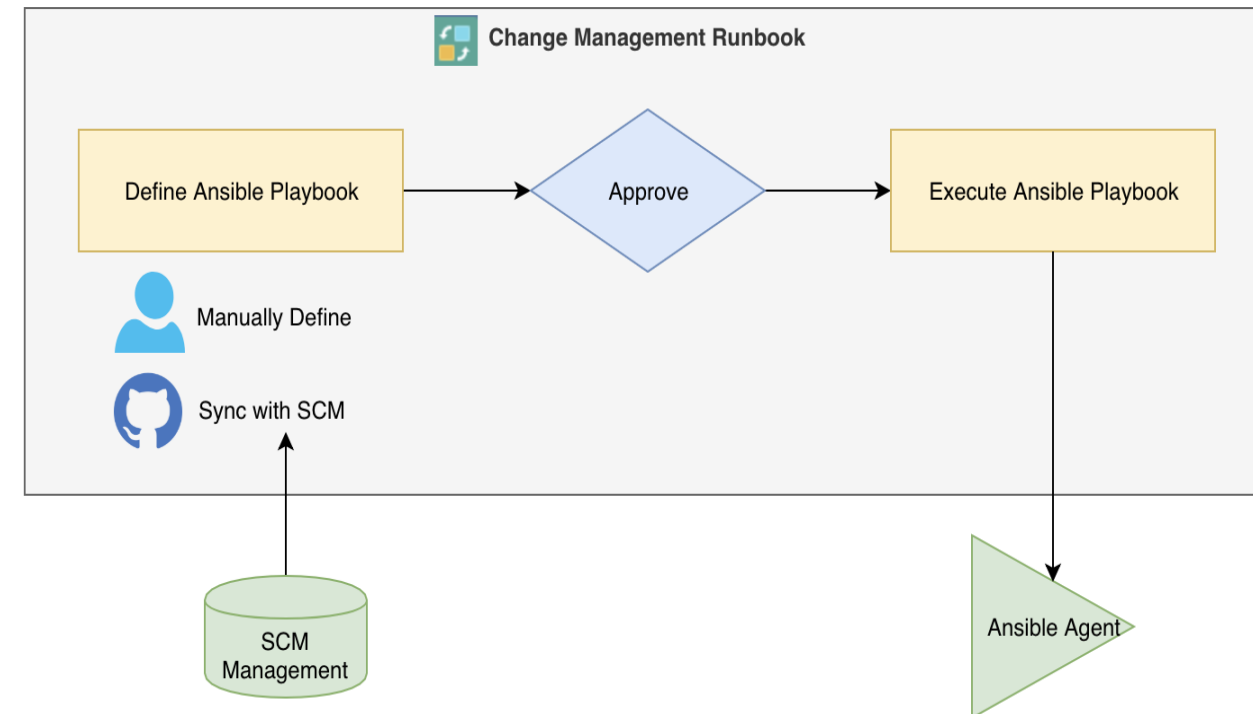
Technology Name	Data Model Support	Topology Support	Path Support	Supported Device Type
Management Route	√	-	√	<ul style="list-style-type: none">• Dell Force 10• F5 Load Balancer
SPB (Shortest Path Bridging)	√	-	√	<ul style="list-style-type: none">• Avaya Switch• Avaya VSP
HSRP	√	L3	√	<ul style="list-style-type: none">• Cisco Nexus Switch

Ansible Integration with NetBrain's Change Management Module



Improved **Audit**, **Control**, and **Scale** of network changes

- **Securely deploy and track** all your Ansible changes (who configured what, why, and when?)
- Deploy Ansible within NetBrain's **change approval workflow**
- More easily **scale Ansible** across environment



Application-Centric Networks

Enhanced Visibility for your Complex Applications



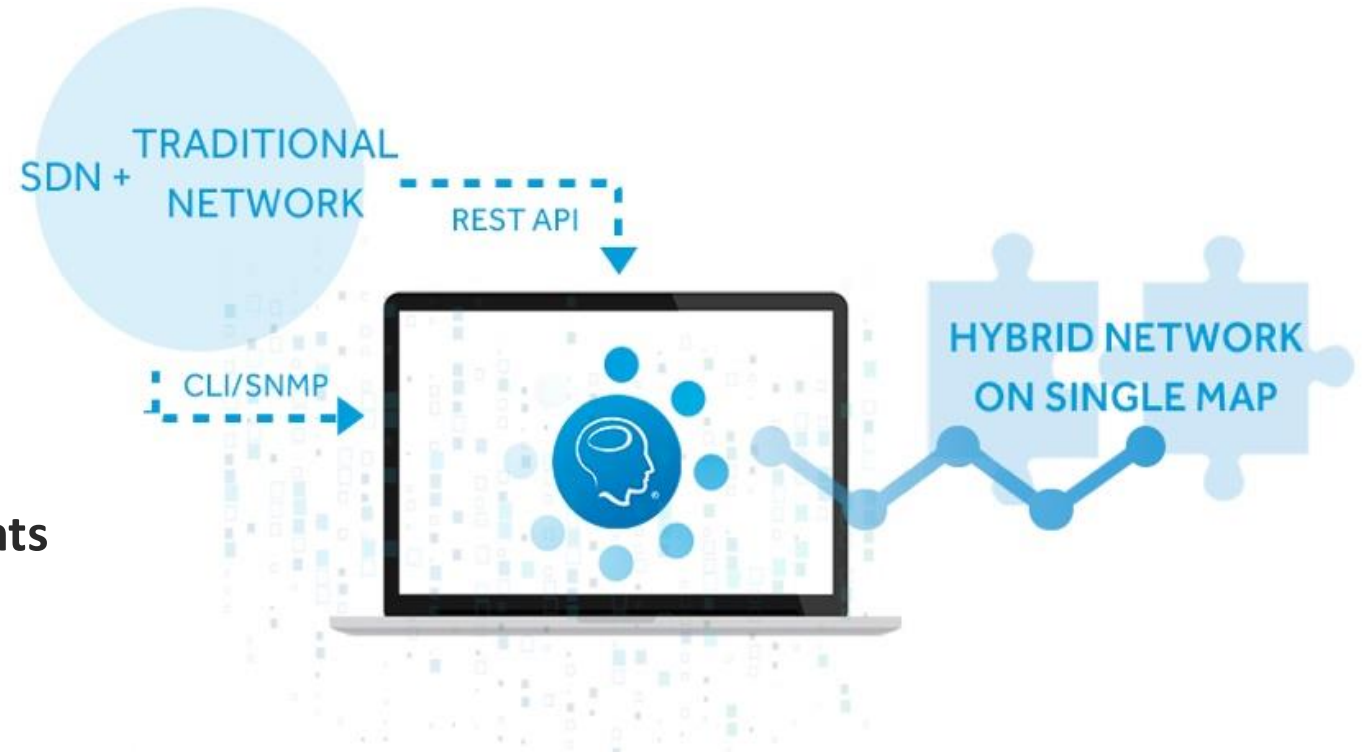
Enhanced SDN Support

To manage SDN, customers need:

- » End-to-end visibility
- » A consistent set of tools
- » A unified workspace for the heterogenous environment

NetBrain provides this, and more. Enhancements for ACI in 8.0:

- » ACI Multi-POD Support
- » ACI Contract Support in Path Calculations
- » Anycast Gateway Support



Application Assurance (New Add-On Module)

Large enterprises run *thousands* of multi-tier apps. The new AAM helps customers understand:

1. For a given application, what part of the network does it rely on? (e.g. a set of A/B paths)
2. For a given network device, what applications are impacted if it goes down?
3. Has a critical application path failed over to backup, without anyone knowing?



Draw and Set Golden Path

APPLICATION	PATH	RESULT	COMPARE W/ PREVIOUS	GOLDEN PATH
BOS-APP	VoIP	Succeeded	Changed	No Change
	Video Service	Failed	Changed	No Change

Manage and Verify Application Paths

Application Assurance and Incident Response

Use Application Assurance during all phases of incident response

1 Monitor

Prepwork 2. Target Devices Review and Edit Page

No.	Application/Path
1	Email Services / Client to DNS(172.24.101.41 to 172.24.32.2)
2	Email Services / Client to SMTP(172.24.101.41 to 158.2.10.161)

[+ Add Application and Path](#)

ADD TASK

Monitor Application Paths

3 Verify

Prepwork Review and Edit Additional Operations After Benchmark Page

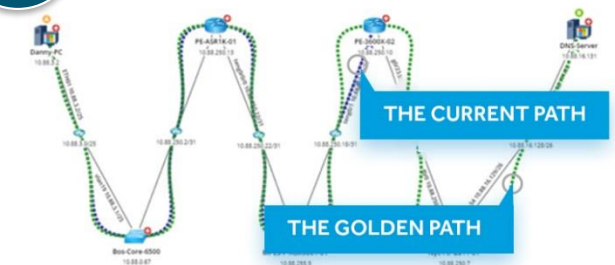
No.	Application/Path
1	Email Services / Client to DNS(172.24.101.41 to 172.24.32.2)
2	Email Services / Client to SMTP(172.24.101.41 to 158.2.10.161)

[+ Add Application and Path](#)

- ☒ Email_Service
- ☐ DNS_SERVICE(10.88.3.2 to 10.88.16.131)
- ☐ SMTP_SERVICE(10.88.3.2 to 10.88.16.5)
- ☒ BOS-APP1
- ☐ VOIP_SERVICE(10.88.8.4 to 10.88.0.68)
- ☐ VIDEO_CONFERENCE(10.88.8.132 to 10.88.0.70)
- ☐ VIDEO_SERVICE(10.88.8.68 to 10.88.0.69)
- ☒ Untitled Application

Verify Application Paths via Benchmark

2 Compare



Compare Current and Golden Path

Other Enhancements

- **Change Analysis** to proactively track changes in your configurations or network
- **Platform Plug-in** to enable platform expansion
- **Export Dynamic Map to Word Document** for more data export flexibility
- **End System Improvements** to enable more sub-types (Printer, Windows, Ubuntu, Mac, etc)
- **Customized Topology Link Styles and Device Icons** for more meaningful visualization of Maps
- **Platform Security Improvements** to harden the NetBrain installation
- **Enhanced Supportability** for Customer Service Ticketing
- ... And More!

Thank You!



NetBrain Technologies
15 Network Drive
Burlington, MA 01803

#1 800 605 7964
info@netbraintech.com
www.netbraintech.com

