

**Challenge**

Managing network changes can be a complex process, which requires precision. According to a 2015 Gartner study, “80% of outages impacting mission-critical services will be caused by people and process issues...” (Ronni J. Colville and George Spafford). An improperly deployed network change can lead to significant disruptions, or worse, cause a major network outage.

**Solution**

NetBrain’s Change Management module is a comprehensive solution for controlling network changes. Within a single workflow, network engineers can define a template, deploy the configuration updates, and then verify the impact of the changes.

**Benefit**

NetBrain will help network engineers reduce risks associated with network change:

- » Visually design network changes from a map
- » Catch unexpected impacts after network changes with the automated benchmark and comparison feature
- » Reduce the need for manually documenting network changes

# Overview of NetBrain’s Change Management Approach

*NetBrain can help you execute network changes with greater confidence. With the Change Management Module, you can deploy configuration updates across many devices at once, with just a click. After changes are made, you can automatically identify the impact they have on topology, routing, and more.*

Within a single workflow, network engineers can create a configuration template to define changes, deploy configuration updates with one click, and then verify the impact of the changes through historical analysis. This holistic approach to network changes not only accelerates the configuration process, but also reduces outages that result from change modification, by validating the post-change design.



Design Changes Visually



Deploy Changes Automatically



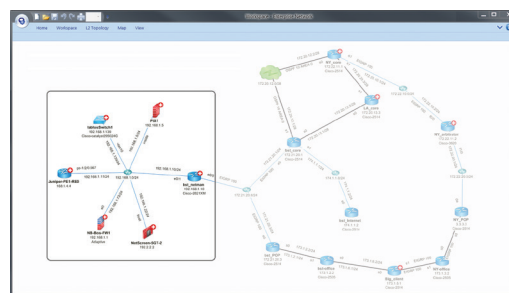
Analyze Impact Immediately



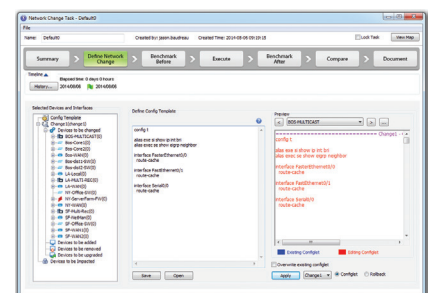
Document Change History

**Design Changes Visually**

Before deploying a single configuration change, engineers can visualize the impact the change will have on the network’s topology. Within NetBrain, users can import one or more configuration files to a new or existing Dynamic Map. Device connectivity, routing design, access-lists, and more will be automatically displayed within the map alongside the live network. Once the changes have been modeled and approved, they can be implemented automatically. To update the configuration on more than one device at a time, users can define interface variables in the configuration template before pushing out all changes at once.



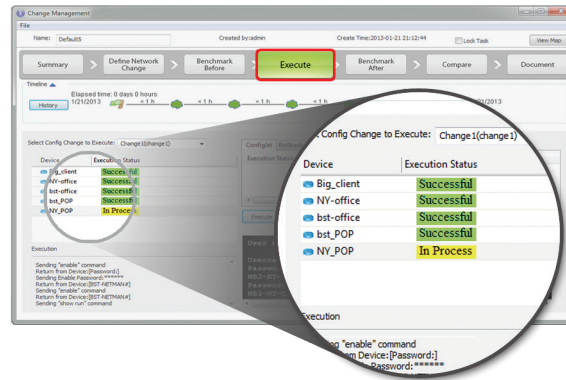
Model configuration charts on the map



Define a configuration template

**Deploy Changes Automatically**

Rather than writing complex and unreliable scripts to deliver updates, NetBrain’s Change Management module enables users to deploy changes to the intended interfaces with one click. NetBrain will log into each device and issue commands in real-time, and in plain sight, for easy review. If a change goes through unplanned, or has an adverse impact, it can be rolled back just as quickly.



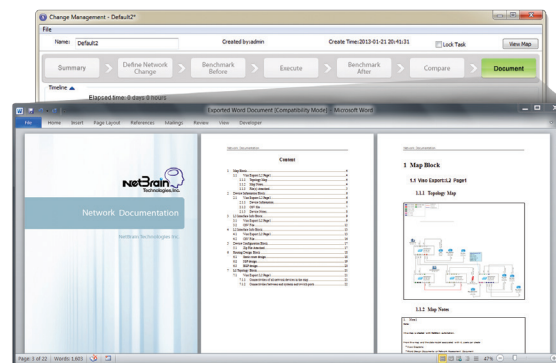
Watch configuration changes in real time

### Analyze The Impact Instantly

As part of the change management workflow, NetBrain can take a snapshot of the network both before and after deploying configuration changes. These snapshots will provide comparative analysis after the configuration updates are complete. Not only can engineers see highlighted changes in the configuration files, but they can also quickly see the impact to route tables and show-commands. This analysis ensures that no adverse conditions occurred as a result of the changes.

### Document Change History

NetBrain makes network change more effective by creating detailed change documentation with a single click. Impacted devices, execution logs, benchmark data, and more are all documented in a single Microsoft® Word file. Also the entire workflow is saved to a Change Task file, with a .qchange file extension making it easy to distribute among team members.



One click change document

### About NetBrain Technologies

At NetBrain Technologies, we've developed the first operating system for total network management. Leveraging our innovative software solution, network management becomes simple and visual through dynamic maps. Our mission is to empower network professionals, enhance IT collaboration and reduce the manual efforts associated with documenting and troubleshooting complex networks. To learn more, visit [info.netbraintech.com/watch-demo](http://info.netbraintech.com/watch-demo).