



NetBrain® Next-Gen R11.1b

System Setup Guide

All-in-One Deployment

Contents

1. System Requirement	3
2. Installing System.....	3
3. Appendix: Stopping and Restarting NetBrain Services	5

1. System Requirement

The All-in-One deployment requires one Windows OS.

Environment	Machine Count	CPU ¹⁾	Memory	Hard Disk	Operating System
≤200 nodes 1 user	1	<ul style="list-style-type: none">4 Physical Cores²⁾x86_64 Processors⁵⁾	32GB	500GB <ul style="list-style-type: none">SSD	<ul style="list-style-type: none">Windows 10 (Pro/Pro N/Pro for Workstations Edition), 64-bitWindows 11 (Pro/Pro for Workstations), 64-bitWindows Server 2016/2019/2022 (Standard/Datacenter Edition), 64-bit

Notes:

¹⁾CPU must support AVX/AVX2.

²⁾If hyper-threading is enabled, one physical core equals to two logical processors; in a virtual environment, the number of vCPUs required is twice the number of physical cores (as listed in the table).

³⁾There must be more than 5GB free space in the system drive (for example, C drive).

⁴⁾The operating system must be installed with an English-language version (not language packs).

⁵⁾ ARM-based processors are not supported.

2. Installing System

Ensure your system meets the requirements and follow the steps to install NetBrain system.

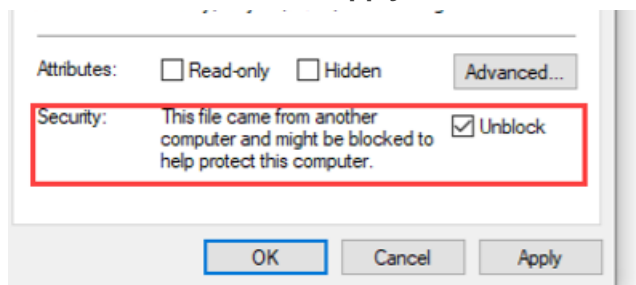
Example: Install NetBrain All-in-One system on Windows 10 Pro.

1. Download the **netbrain-all-in-one-windows-x86_64-11.1b zip** file and save it to the Windows 10 Pro.

Tip: The download link is in the initial email sent by NetBrain.

2. Check if the package is blocked.

- 1) Right-click **netbrain-all-in-one-windows-x86_64-11.1b.zip** and select **Properties** from the drop-down.
- 2) Enable **Unblock** and click **Apply**. If the **Unblock** checkbox does not exist, skip this step.



3. Extract the **netbrain-all-in-one-windows-x86_64-11.1b zip** file.
4. In the **netbrain-all-in-one-windows-x86_64-11.1b** folder, double-click the **netbrain-application-11.1b.exe** file.
5. Follow the Installation Wizard to complete the installation.

The following pages might require your attention.

Page	Note
NetBrain Service Credentials page	Create and keep note of the credentials for NetBrain Service
License Information page	<div>Fill in your license information.</div> <ul style="list-style-type: none">▪ License ID and Activation Key: The license ID can be found in the invitation email sent by the NetBrain Partner Management team.▪ Email Address: Input the email used to apply for the license.▪ First Name, and Last Name: Enter these fields according to your specific requirements.

Tip: If any error occurs during the license validation or system installation, please contact [NetBrain Support](#) for assistance.

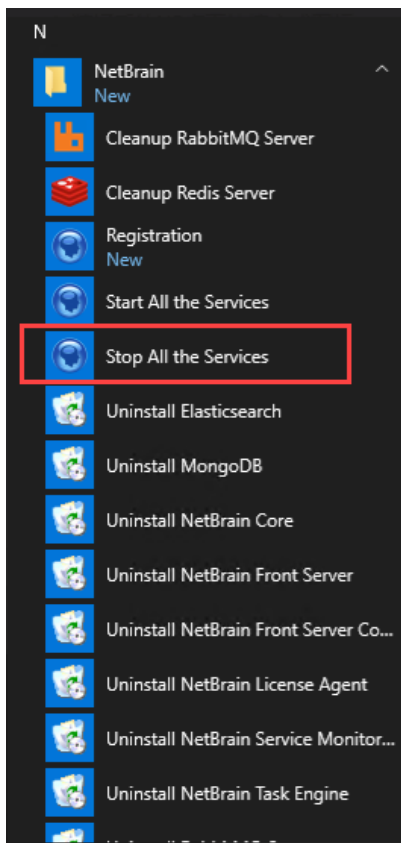
6. Click NetBrain shortcut on the desktop.

7. In the login page, enter the default username and password: **admin/admin**.

3. Appendix: Stopping and Restarting NetBrain Services

Follow the steps to stop NetBrain services to free up system resources when services are not in use, and to restart services to resume using them. Take Windows 2019 as an example.

- To Stop all services:
 1. Click the Windows start menu, scroll down and locate the **NetBrain** folder.
 2. Click the **Stop All the Services** app to terminate NetBrain services.



- To restart the services:
 1. Click the Windows start menu, scroll down and locate the **NetBrain** folder.
 2. Click the **Start All the Services** app to resume NetBrain services.